



KEY			
DESCRIPTION	POLICY	DESCRIPTION	POLICY
Green Belt	GBC1	Site of Special Scientific Interest - SSSI	ENV13
Rural Area Beyond Green Belt	GBC2	Wildlife Sites - WS	ENV14
Major Developed Sites	GBC4	Scheduled Monuments - SM	BH1, BH2, BH3
Existing Playing Fields/Open Space/Recreation Areas	LRC1	Area of Archaeological Significance - AAS	BH1, BH2, BH3
Employment Areas	EDE1	Conservation Areas	BH4, BH5, BH6, BH7, BH8
Furneux Pelham Category 2 Village	OSV2	East Herts District Boundary	

EAST HERTFORDSHIRE LOCAL PLAN
SECOND REVIEW

APRIL 2007

NORTH EAST
QUADRANT

SHEET B

SCALE 1:25,000

See Reverse for:
Inset Map 3 Braughing
Inset Map 4 Standon/Puckeridge



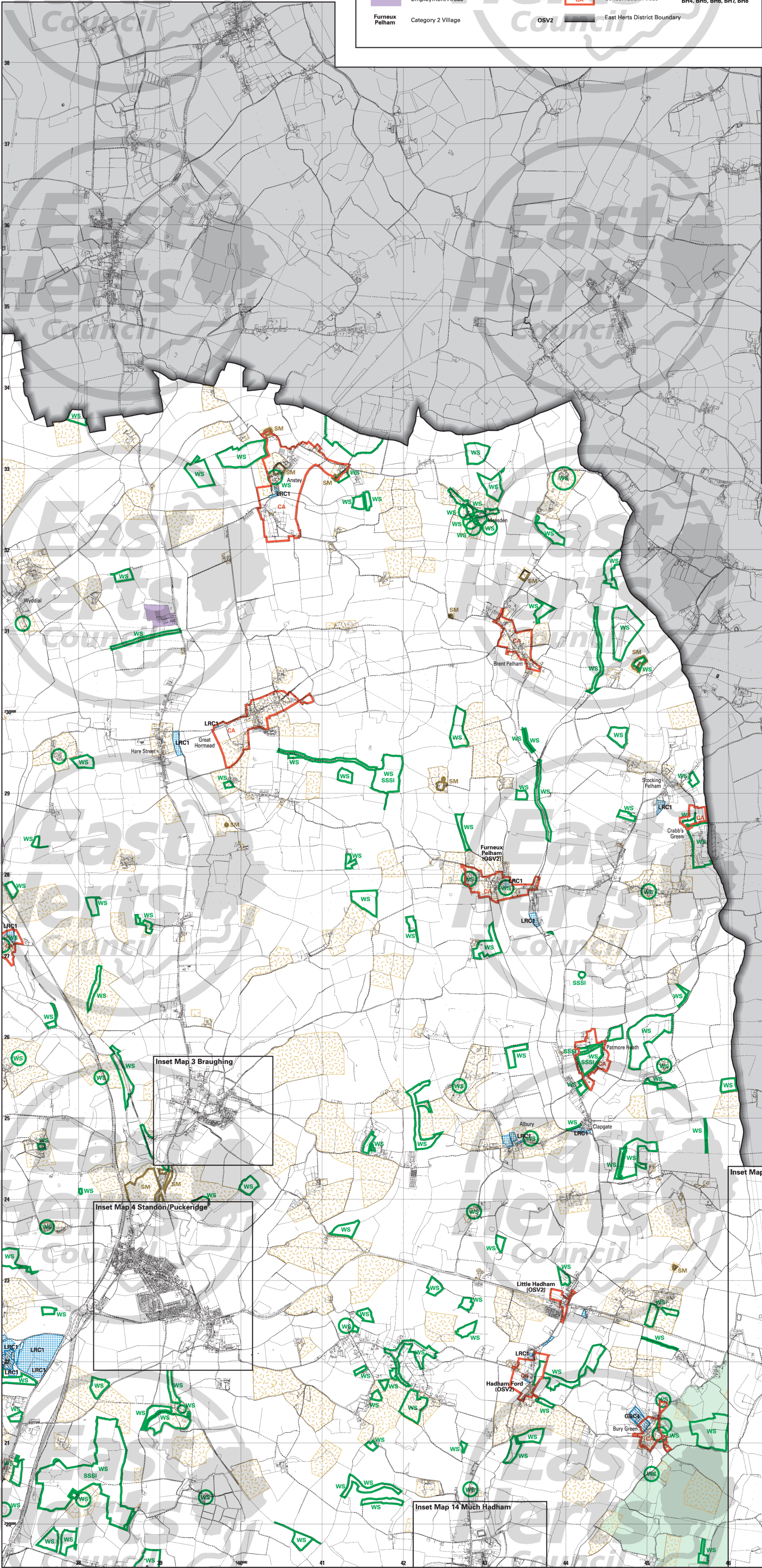
East Herts Council
Planning Policy
Wallfields, Pegs Lane, Hertford SG13 8EQ
Tel: 01279 655261

Website: www.eastherts.gov.uk
email: planningpolicy@eastherts.gov.uk

Reproduced from the Ordnance Survey map data
with the permission of the controller of Her Majesty's Stationary
Office Crown Copyright

Unauthorised reproduction infringes Crown Copyright
and may lead to prosecution or civil proceedings.
2007 East Hertfordshire District Council LA 077852

Maps produced by Lovell Johns Ltd., Oxford, England.



Inset Map 3 Braughing

Inset Map 4 Standon/Puckeridge

Inset Map 5 Bishop's Stortford

Inset Map 6 Bishop's Stortford Town Centre

Inset Map 14 Much Hadham